

438m<sup>2</sup> | 15m (Corner)

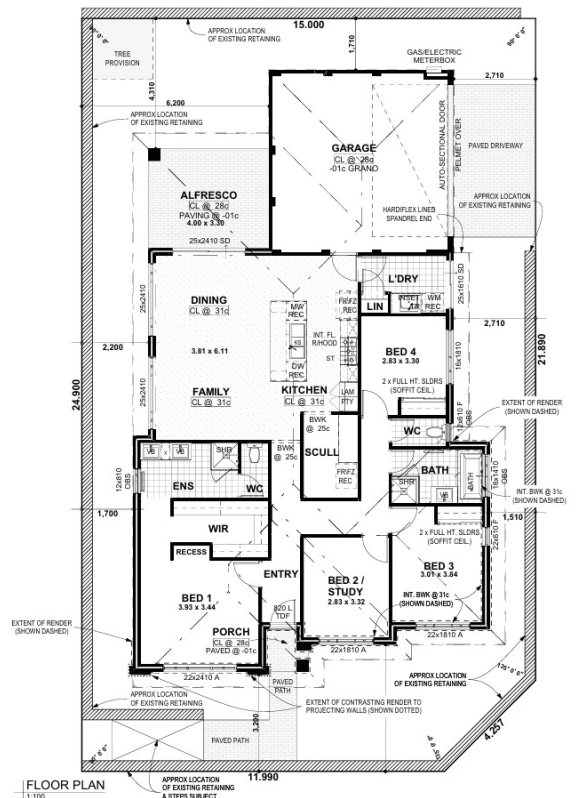


## Roma

4 2 2

Price from: \$770,631\*

- Reverse cycle ducted a/c throughout the entire home
- Tiles to living areas, carpets to bedrooms and theatre
- Full designer kitchen including stone benchtops, lift up overhead cabinets, pot drawers in lieu of cupboards
- 900mm Westinghouse appliances including integrated rangehood
- Double mirrored sliding robes to all minor bedrooms
- Double vanity with stone bench top to ensuite
- Blinds to all windows
- LED downlights throughout



Jelena: 0460 307 260 | [catenaestate.com.au](https://catenaestate.com.au)

\*Prices correct as of April 2025. Prices subject to change without notice. Photos for illustrative purposes only and may not comply with design guidelines.